

For Sale - \$495,000

5909 Martway Street Mission, Kansas



- 4,928 SF Office Building
- Multi-Tenant or Owner / User
- Zoned **MS-2**
- Recently Renovated
- 20 Dedicated Parking Spaces



RUBENSTEIN REAL ESTATE CO., LC

6310 Lamar, Suite 220

Overland Park, KS 66202

Phone (913) 362-1999 | Fax (913) 362-1969

www.rubensteinre.com

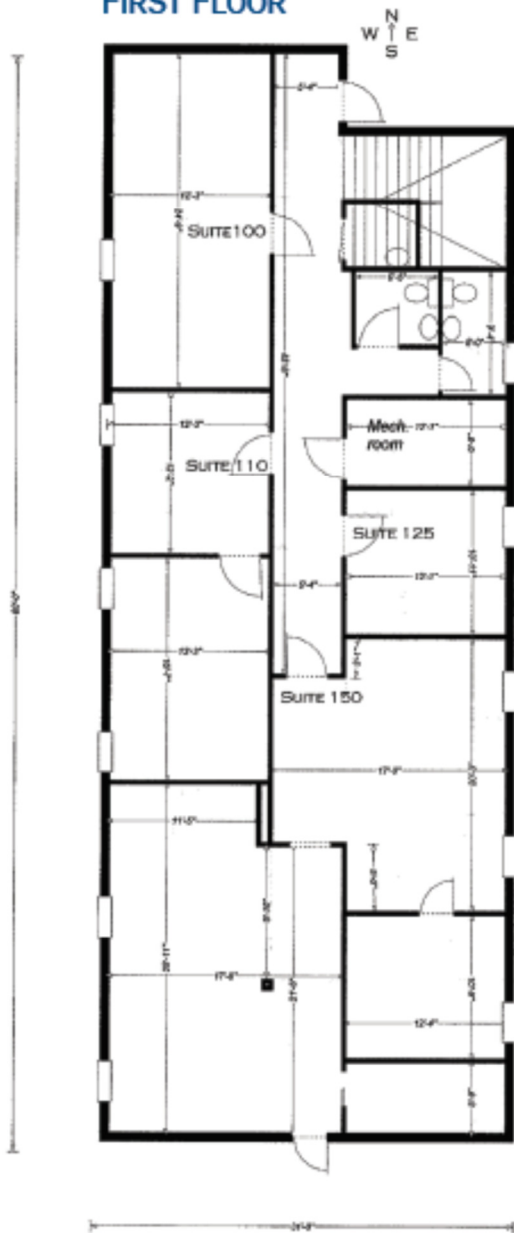
CULLEN MAGARIEL

cullen@rubensteinre.com

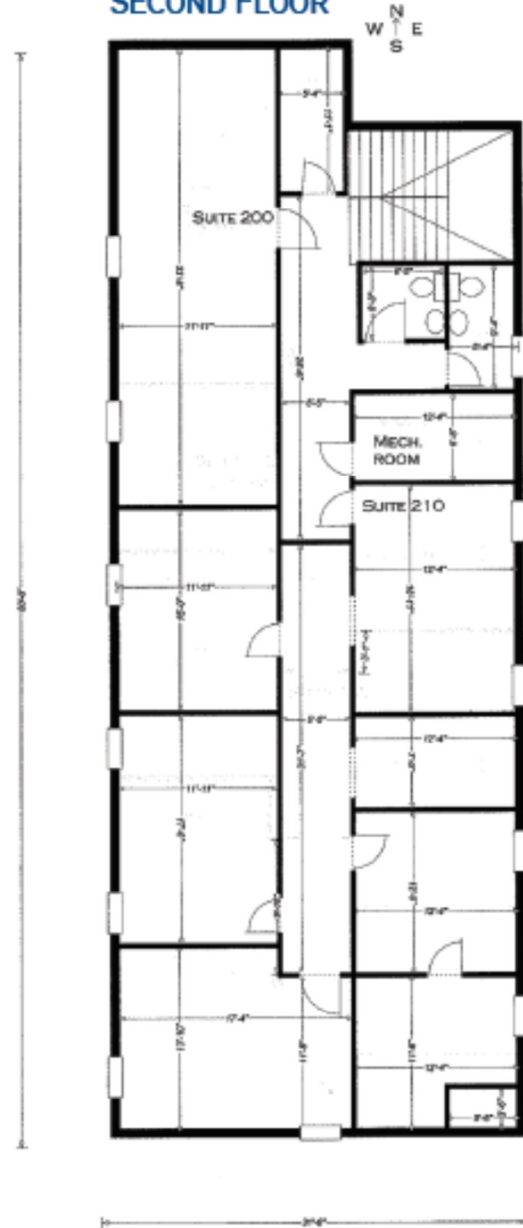
All information furnished regarding property for sale is from sources deemed reliable, but no warranty or representation is made as to the accuracy thereof and the same is submitted subject to errors, omissions, changes of prices, rental or other conditions, prior lease or withdraw without notice.

5909 Marthway Street Mission, Kansas

FIRST FLOOR



SECOND FLOOR

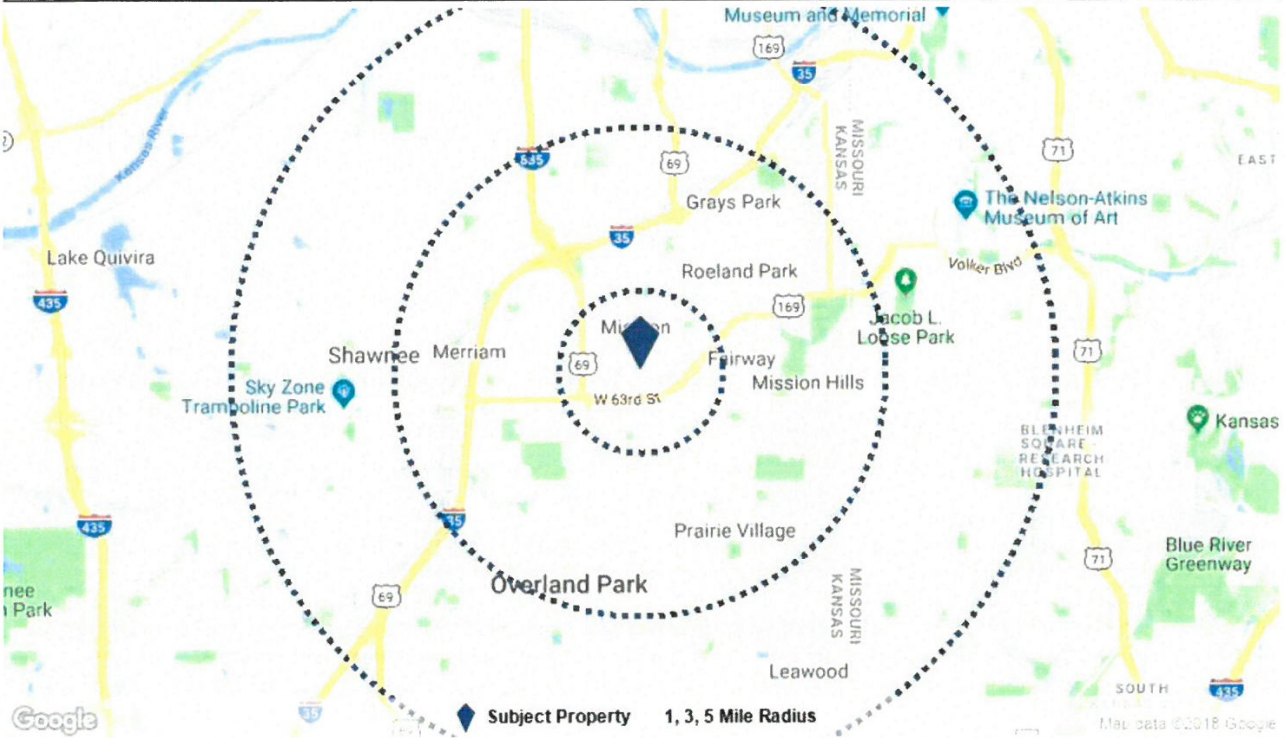


Demographic Overview

5909 Martway St

Population (1 mi)	Avg. HH Size (1 mi)	Avg. Age (1 mi)	Med. HH Inc. (1 mi)
10,355	2.1	40	\$66,425

DEMOGRAPHIC RADIUS RINGS



DEMOGRAPHIC SUMMARY

	1 Mile	3 Mile	5 Mile
Population			
2018 Population	10,355	88,898	258,021
2023 Population	10,738	92,035	265,613
Pop Growth 2018-2023	3.7%	3.5%	2.9%
2018 Average Age	40	39	39
Households			
2018 Households	5,012	39,797	115,826
2023 Households	5,191	41,200	119,222
Household Growth 2018-2023	3.6%	3.5%	2.9%
Median Household Income	\$66,425	\$64,853	\$60,281
Average Household Size	2.1	2.2	2.2
Average HH Vehicles	2	2	2
Housing			
Median Home Value	\$185,595	\$185,366	\$181,477
Median Year Built	1957	1957	1958